

# Build an Equity Strategy with GIS: Lessons learned from lighthouse accounts

Sophia Garcia

Industry Specialist, Equity and Civic Nonprofits

Thursday, February 20<sup>th</sup>

*California Racial Equity  
Commission Data Committee*





# esri

Mission

## SERVING OUR USERS

Advancing GIS & *The Science of Where*

Supporting Spatial Literacy, Education & Conservation

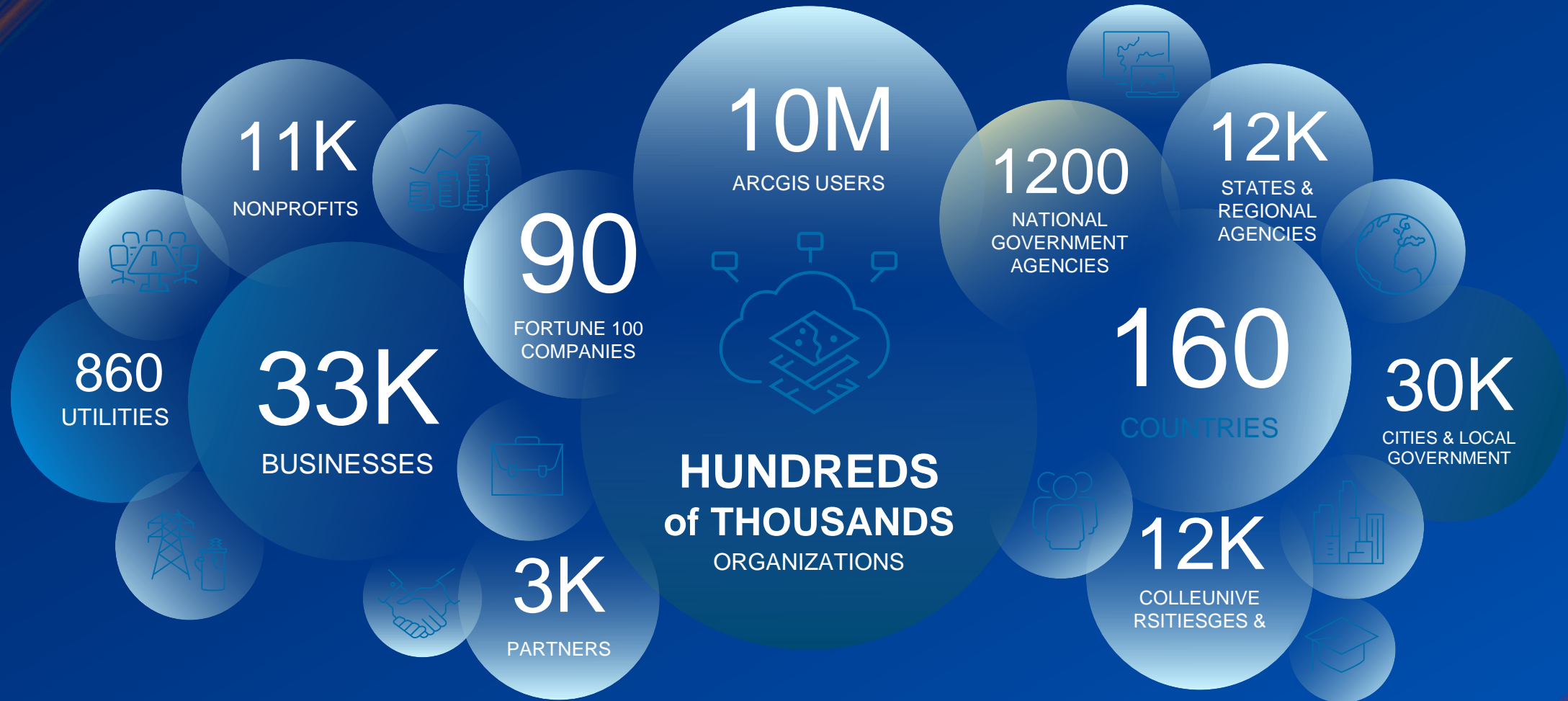
Engineering and Science Focused

*... Working Together to  
Make the World a Better Place*

*Strong  
and Growing*



# Esri by the Numbers



# Understanding GIS

A way of thinking by focusing on geography first



Software, SaaS and PaaS



# State of California

Esri technology interconnects people & organizations





# Esri

Equity and Civic Nonprofit Lead



Equity and Social Justice SIG, Esri UC 2019

NLC Real Committee, 2024



NACO Equity Taskforce, 2024

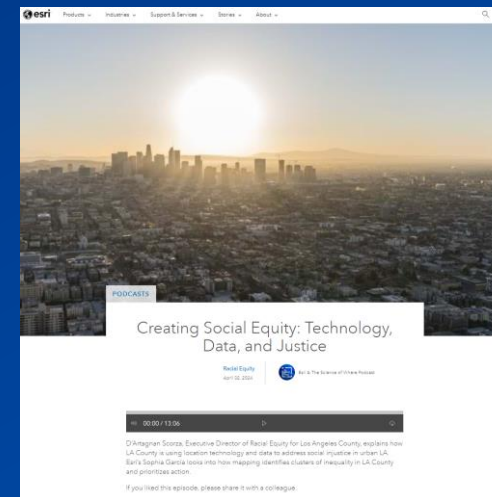


Unidos US Headquarters in DC

2024



NLC City Summit Atlanta, 2023



Science of Where Podcast with LA Equity Officer, 2024

[Creating Social Equity: Technology, Data, and Justice \(esri.com\)](https://www.esri.com/podcasts/creating-social-equity-technology-data-and-justice)



# Equity Across Industry



## PUBLIC SAFETY

Recidivism, Transparent Policing, Response Time

## ENERGY EQUITY

Power Outage Restoration Plans, Pollution, Investment in Clean Energy



## TRANSPORTATION EQUITY

Access to Transit, Transportation Cost, Justice40 Initiative



## ECONOMIC OPPORTUNITY

Education, Job Accessibility, Digital Equity

## EDUCATION

Workforce Development, Digital Equity



## ENVIRONMENTAL JUSTICE

Conservation, Land Management, Safe Water, Pollution



## HEALTH EQUITY

Access to Health Care, Food Security, Park Accessibility, Social Determinants of Health, Digital Equity

# Four Technology Tenets

Initiate Your Equity Strategy

## STEP 1:

### Understand Your Community

Start With a Data-driven Understanding



Chief Equity Officer and GIS  
Manager relationship

## STEP 2:

### Build A Location Strategy

Use Location to Attain Equitable  
Budgeting and Planning



Equity embedded in  
jurisdiction wide strategic  
plans

## STEP 3:

### Operationalize Your Work

Empower Staff With Tools and Analysis



GIS data is available online  
and accessible

## STEP 4:

### Measure Your Impact

Integrate Accountability and Transparency  
Into Your Workflow



Engage the community



# Equity Strategic Plans in Action

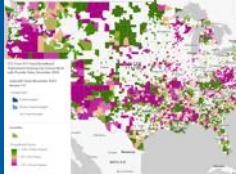
Utilize Esri tools for Your Strategy

## Understand Your Community

ArcGIS  
StoryMaps



Esri Maps for Public Policy



ArcGIS  
Living Atlas



ArcGIS  
Business Analyst



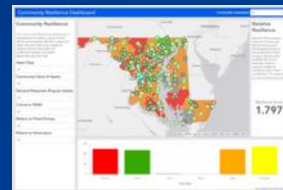
## Use a Location Strategy



ArcGIS  
Spatial Analyst



ArcGIS Solutions



ArcGIS Online

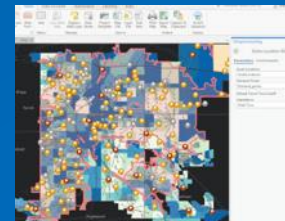
## Operationalize Your Work



ArcGIS Pro



Composite Index Tool



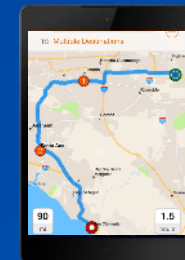
Social Equity  
Analysis Solution

## Measure Impact



Police  
Transparency  
Solution

ArcGIS  
Field Maps



ArcGIS Hub



# Equity Strategic Plans in Action

## Lighthouse examples

### LA County Anti-Racism Diversity & Inclusion



The State of Black Los Angeles County report provides the social and historical context that explains why racial disparities exist. The report's maps allow county officials to see the number and location of neighborhoods where disparities exist.

### City Of Tucson, Arizona EQUITY DATA STRATEGY



A centralized repository of Decennial Census data, ACS data, and Esri's annual estimates processed for Tucson's unique geographic boundaries. The Hub will streamline access to census data by including the most frequently used variables pre-apportioned to the geographic boundaries most useful for research and analysis conducted by City of Tucson staff and community.

### City of Tacoma, Washington



The Tacoma Equity Index measures entrenched economic problems, housing needs, and social justice issues. The tool examines five categories of inequity that include livability, education, environmental health, economic opportunity, and accessibility. These topics were analyzed with GIS technology to show patterns and represent inequities on a map.



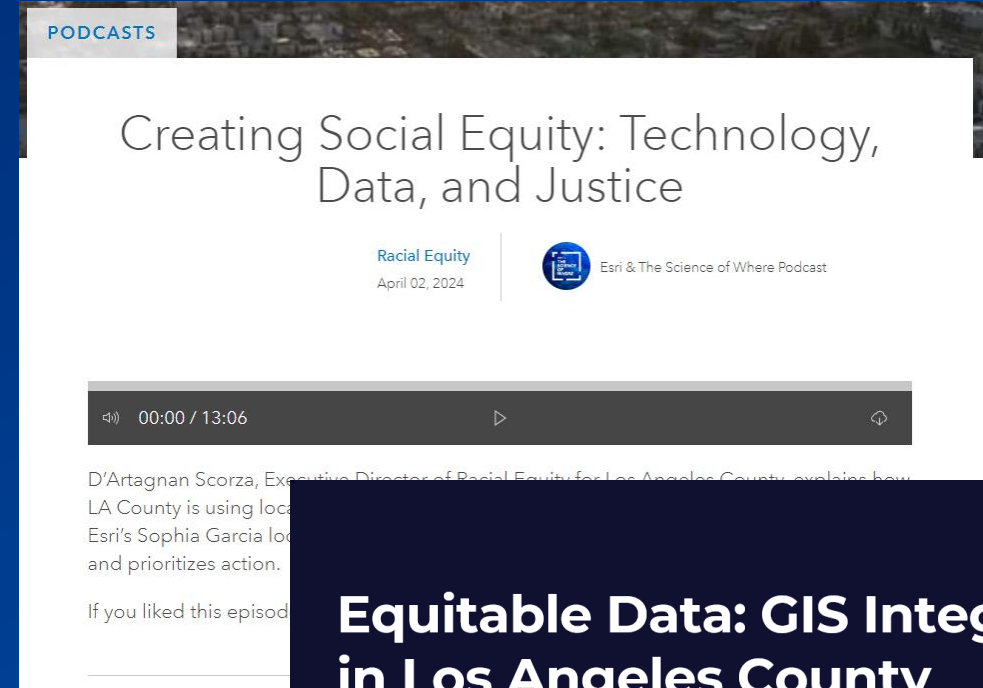
# LA County





# LA County Equity Officer and GIS Partnership

- “We have to get really smart with how we both target our efforts and target our outreach but also how we use our resources to improve peoples lives. It is not just about preventing negative life outcomes but this is about enabling people to live their best lives.”  
D’Artagnan Scorza
- ARDI Department participates in the Planning and Data Working Group



## Equitable Data: GIS Integration in Los Angeles County

May 2023

**Dr. D'Artagnan Scorza**  
Executive Director



County of Los Angeles  
Anti-Racism,  
Diversity,  
& Inclusion  
CREATING AN LA COUNTY  
WHERE WE ALL THRIVE

**Dr. Steven J. Steinberg**  
Geospatial Information Officer



County of Los Angeles  
Enterprise GIS




# Harnessing the Power of Data

- Establish a baseline to monitor trends on strategic goals
- Share information on funding and other resources
- Evaluate effectiveness of programs
- Identify areas of county with highest need
- Track improvements over time

## CEO. Recovering Better Than Before: Ensuring Equitable Implementation of the American Rescue Plan

On July 13, 2021, the Board of Supervisors (Board) adopted a motion to **strategically use ARPA funds to the maximum benefit of the communities suffering disproportionate health and economic impacts from the COVID-19 pandemic**.

The motion highlights the important opportunity to transform the lives of millions of County residents by centering equity, harm reduction, and providing proportional resources to address the needs of our most vulnerable communities.



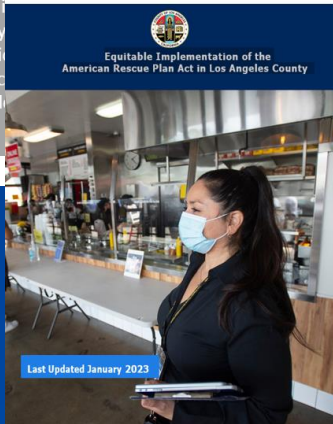
3. A public-facing

5. An

## CEO. Equitable Implementation of the American Rescue Plan Act in LA County

The plan is based on three strategic pillars, which create the foundation for a "Better Than Before" recovery in Los Angeles County.

STRATEGIC PILLAR 1 Equity-Focused Investments	STRATEGIC PILLAR 2 Building A Bridge to an Equitable Recovery	STRATEGIC PILLAR 3 Fiscal Stability and Social Safety Net
Allocation: <b>\$567.90 Million</b> Addressing longstanding inequities in hard-hit and historically disadvantaged communities through urgent, transformative, and innovative investments.	Allocation: <b>\$239.68 Million</b> Deploying supportive services through an equity lens to jumpstart recovery in communities that have experienced the most severe impacts of COVID-19.	Allocation: <b>\$167.42 Million</b> Sustaining and expanding key programs to ensure a strong safety net as we emerge from the pandemic.



Equitable Implementation of the American Rescue Plan Act in Los Angeles County

Last Updated January 2023

- American Rescue Plan Act Program Design Process
- Equitable Contracting
- Outreach and Engagement
- Publicly Accessible Data Tools

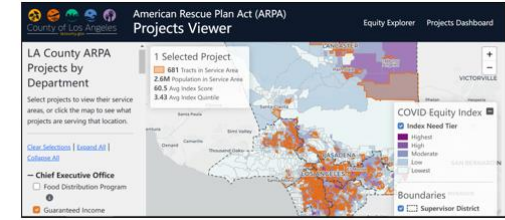
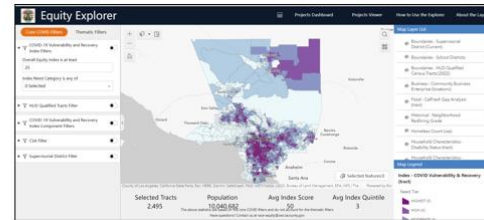
5


# LA County Publicly Accessible Data Tools

- ARP Project Dashboard
- American Rescue Plan Act Project Map
- Equity Explorer Map Tool
- Covid 19 Vulnerability and Recovery Index Dashboard

## CEO. Publicly Accessible Data Tools

Supports equitable funding decisions, transparency, and accountability.





## Los Angeles County Equity Hub

### Enterprise GIS

GIS for Equity Data Tools & Apps Resources

## Los Angeles County GIS for Equity

Leveraging Geographic Information Systems (GIS) data & technology to strengthen Countywide efforts towards spatial justice.

*"Thinking spatially about justice not only enriches our theoretical understanding, it can uncover significant new insights that extend our practical knowledge into more effective actions to achieve greater justice and democracy."*  
(Edward Soja - from "The City and Spatial Justice," 2009)

**Equity** refers to the idea that differences matter and that systems must be balanced to distribute resources and opportunities needed to reach equal outcomes by treating everyone justly according to their circumstances.

Definition by the Los Angeles County Chief Executive Office Anti-Racism, Diversity, and Inclusion (AREDI) Initiative

[More from AREDI](#)

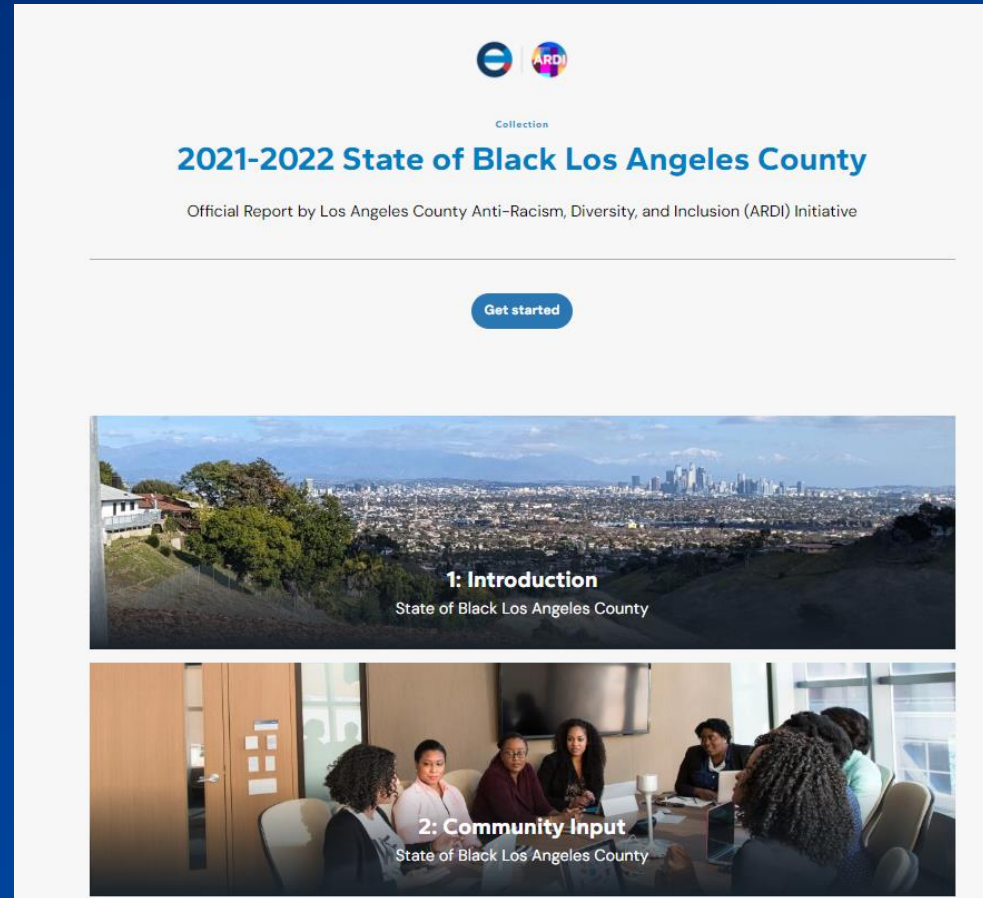
### County Leaders Stand for Justice

The Board of Supervisors of the County of Los Angeles, through its Board of Directors, has adopted a resolution that recognizes the importance of equity and justice in the County's operations and the need for the County to take action to address the disparities in the County's services and programs. The resolution calls for the County to take action to address the disparities in the County's services and programs and to ensure that all residents have access to the same quality of services and programs. The resolution also calls for the County to take action to address the disparities in the County's services and programs and to ensure that all residents have access to the same quality of services and programs.



# Engaging Community in LA County

- State of Black LA report listening sessions
- Grant opportunity for “Mapping Resources for Justice Involved Organizations”
- Coordinating with departments on their community engagement





# City of Tucson





# City of Tucson Equity Officer and GIS Partnership

“Equity is a complex field,’ Walker said. ‘Laura has been able to use GIS to articulate data in a way that is very powerful to our policymakers and the community’. Walker stressed that although demographic data is complex, visualizing it on a map lets people clearly identify burdened populations.”

*Data has power. Harnessing that power is key to unlocking equity.*



**Laurice Walker**

Chief Equity Officer  
Laurice.Walker@TucsonAZ.Gov



**Laura Sharp**

Equity Data Manager  
Laurice.Sharp@TucsonAZ.Gov



Equity and Social Justice | June 18, 2024

**The Approach to Achieving  
Equity through Data Visualization**

By Sophia Garcia



# 4 ways TEDS will support departments on their equity data journey



## 1 Equity Priority Index

*Decision Makers*



## 2 Demographic Collection Standards

*Professional Staff*



## 3 Equity Open Data Hub

*Data Analyst*

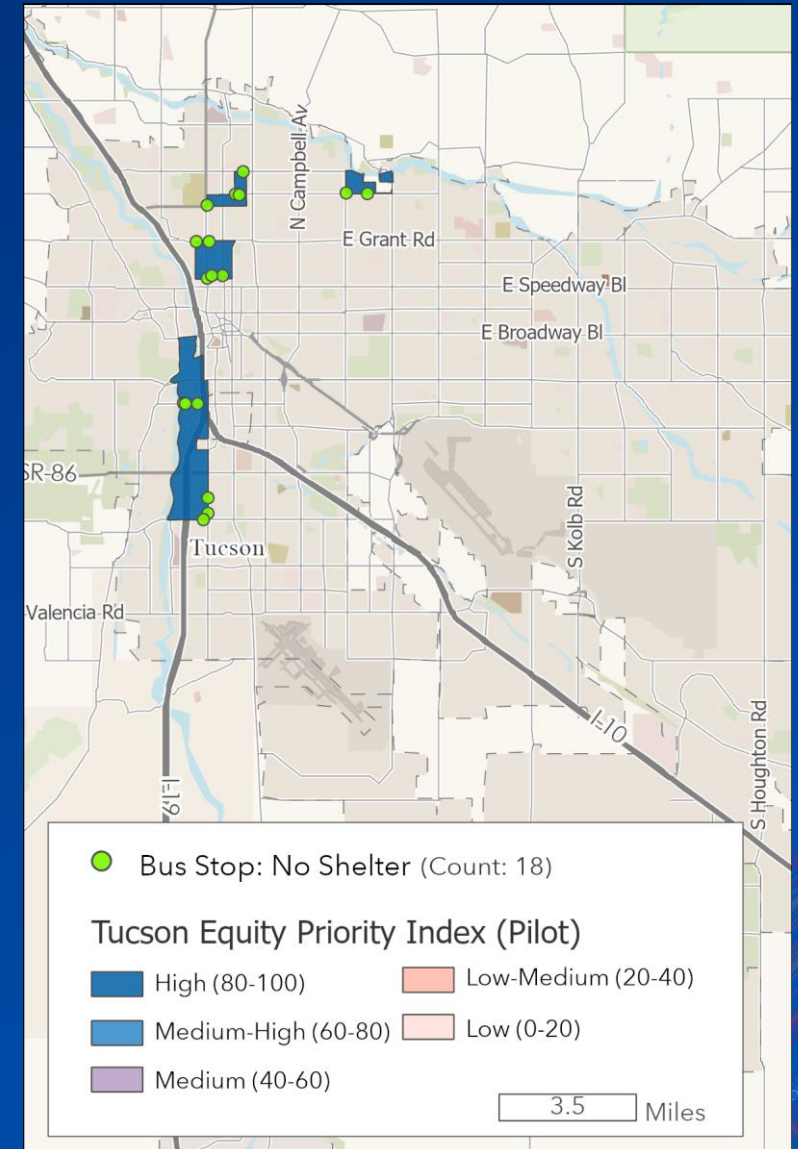
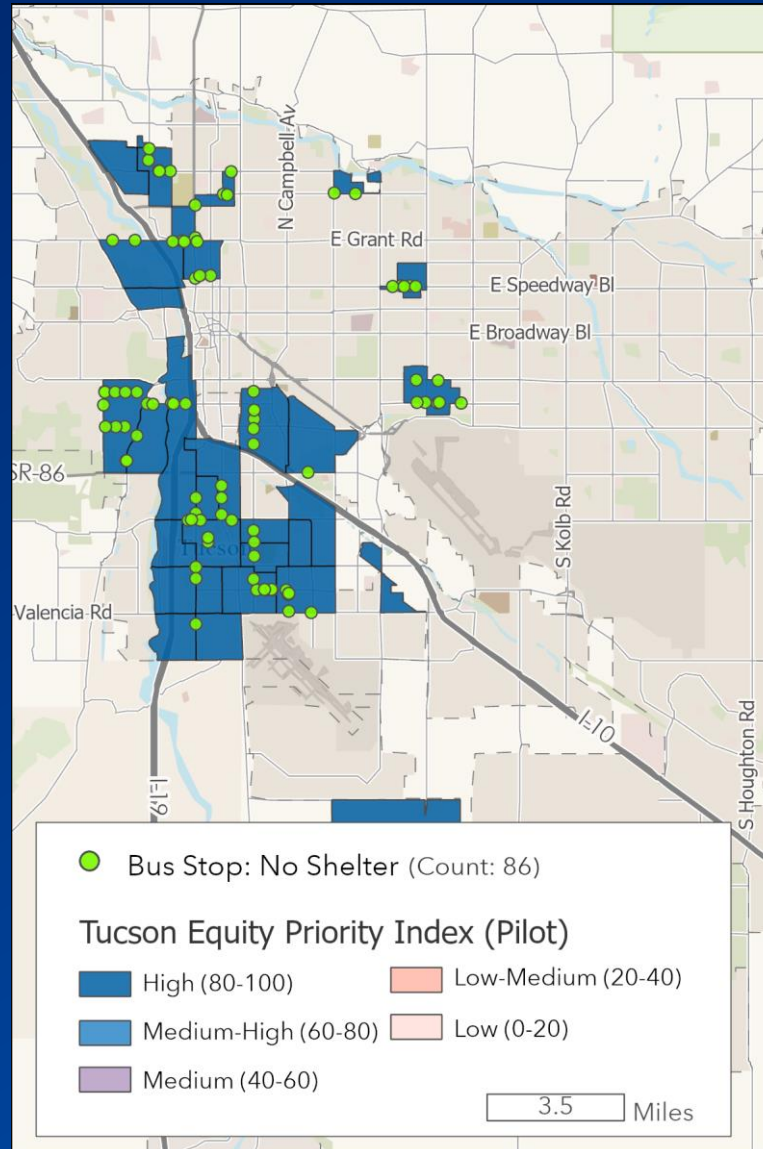
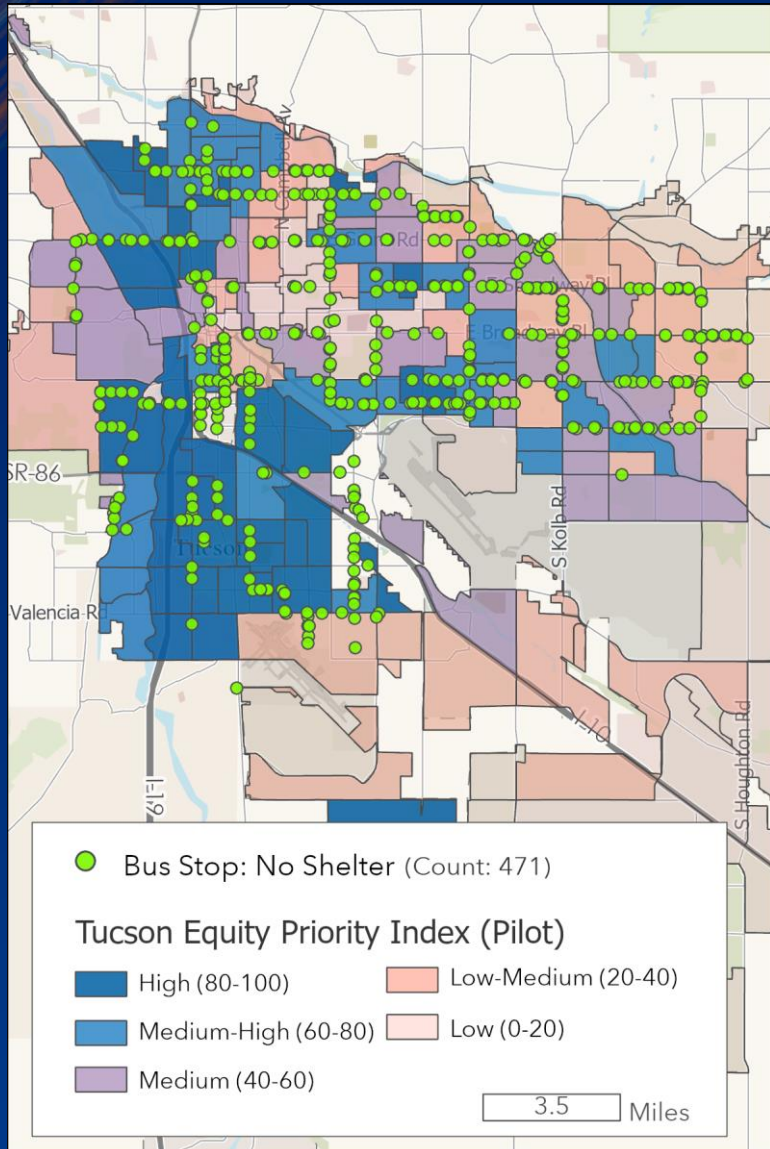


## 4 Demographic Lookup & Infographic App

*Casual Users*



# Tucson Index | Simple Overlay



# Engaging Community in Tucson

## Community Input

- **Two surveys**
  1. What **variables** go into the index
  2. **Weights**—What is the relevant importance of each variable?
- **Goals**
  - Let community **help define** who is vulnerable and most in need
  - Get community **buy-in**
- **Method**
  - Analytic Hierarchy Process

## Key Components of the Collection Standards

- **Standardized Questions & Answers**
  - Standardized questions help ensure uniformity in data collection across projects, departments, and time periods.
- **Clear Definitions**
  - Clear definitions of each category or attribute to ensure consistent interpretation and reporting of demographic data.
- **Informed Consent, Privacy, Sharing, & Data Storage Expectations**
  - Information on why we collect data, how it will be stored, who has access, and how it will be shared publicly

Community Input in Equity Index

Community Engagement Surveys  
templates for departments

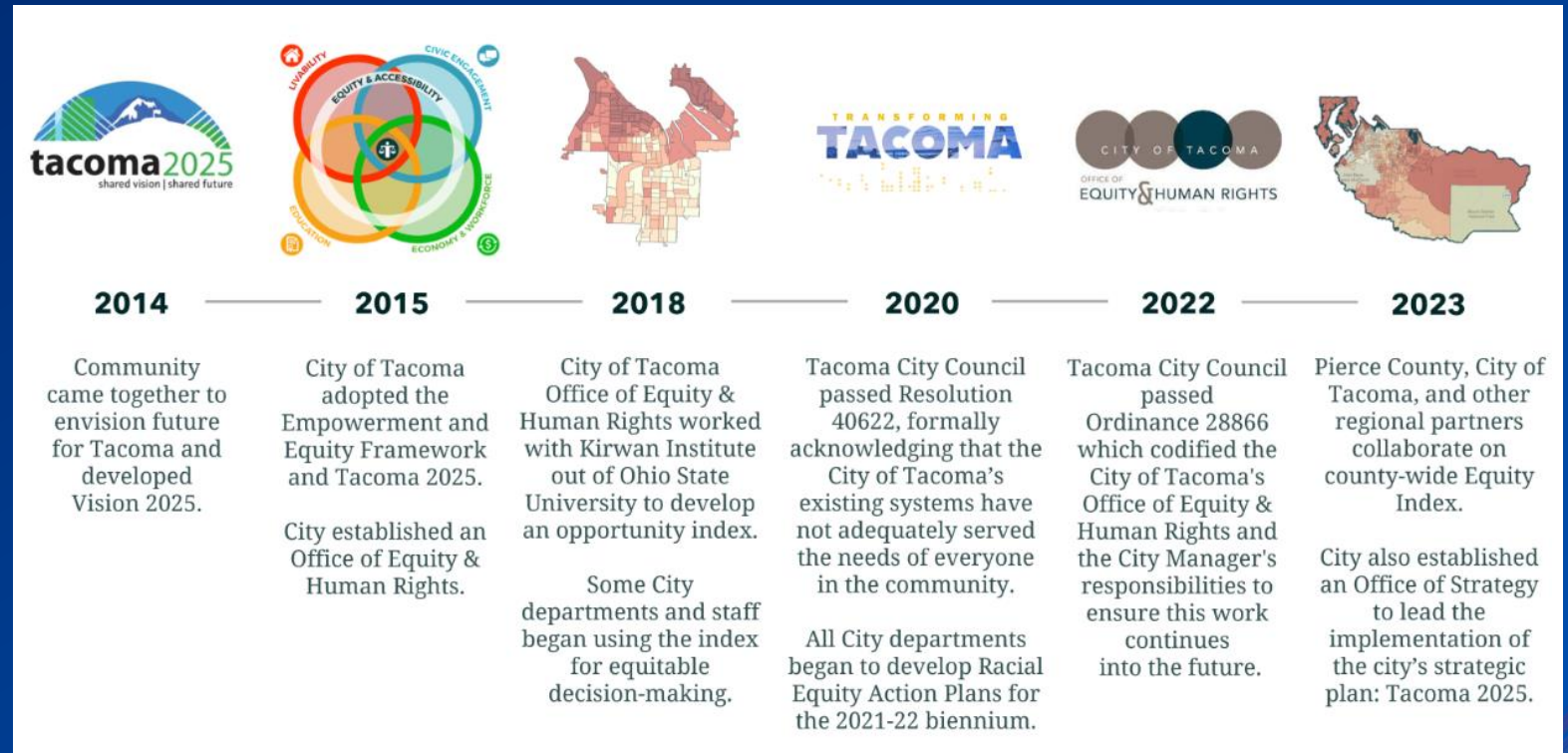


# City of Tacoma



# City of Tacoma Equity and GIS Partnership

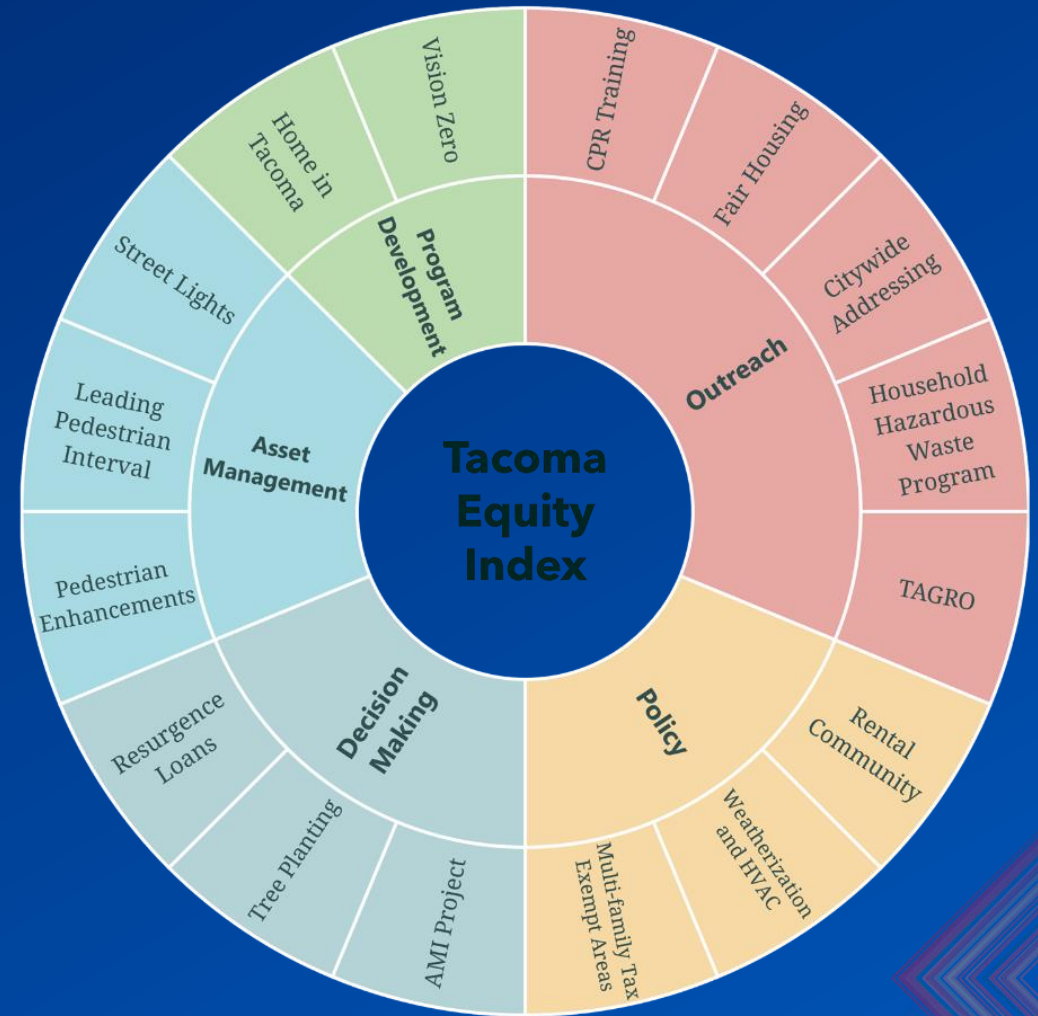
- The City of Tacoma's Office of Human Rights worked with the Kirwan Institute out of Ohio State University to develop an opportunity index.
- Created Tacoma Index





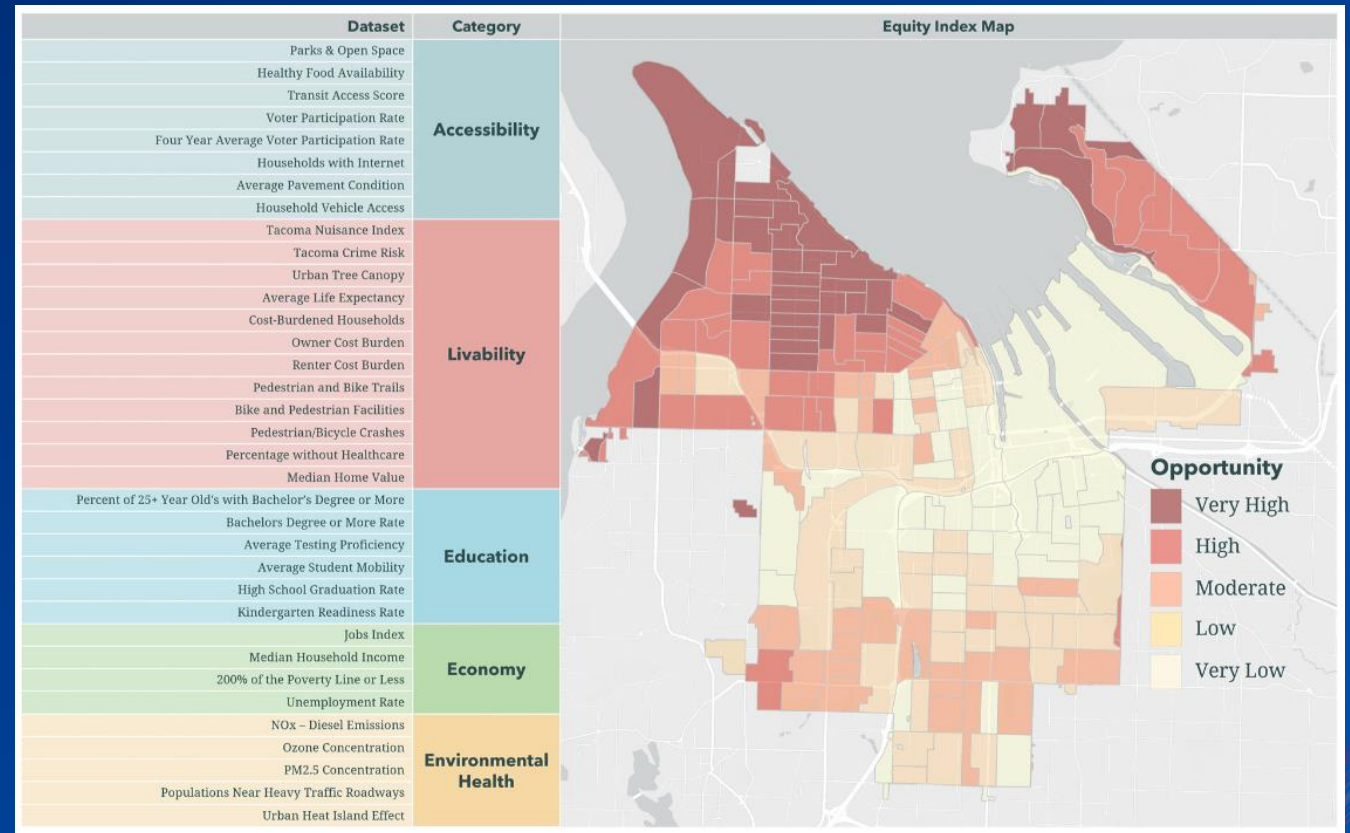
# Embed equity in Strategic Plans

- The City of Tacoma is actively integrating the Equity Index as a tool in other daily operations and programs including
  - City Council decisions
  - City budget proposals
  - Department Racial Equity Action Plans



# Data Online and available to other departments

- The index has five categories and 32 different indicators.
- Utilizing the Equity Index as a tool for City departments
  - The Tacoma Fire Department overlaid cardiac arrest data with Equity Index data
  - Now the department uses the Equity Index to select locations for future CPR trainings



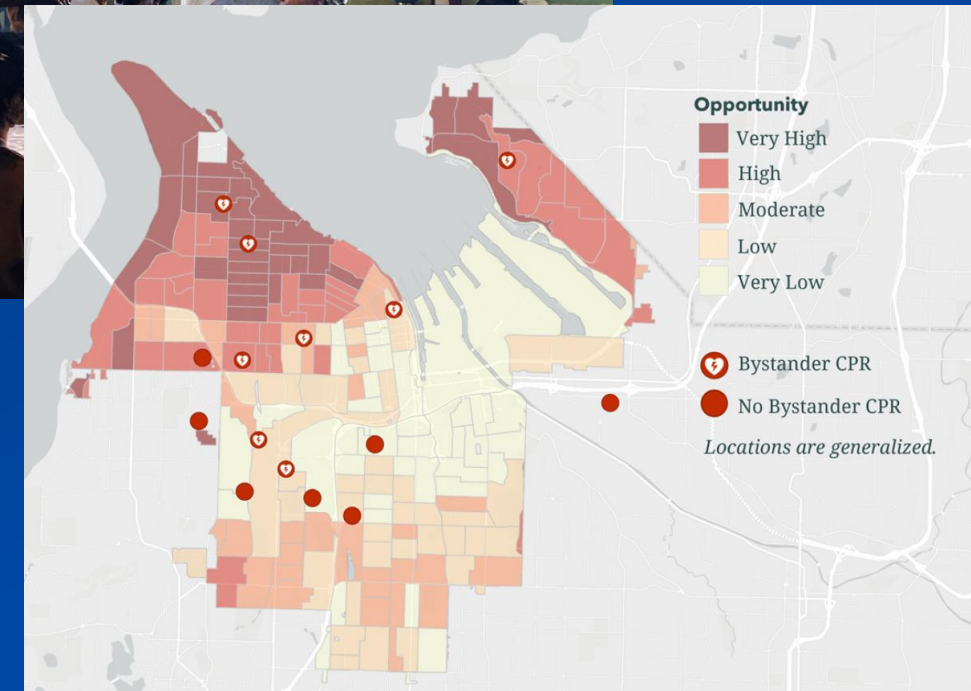


# Engage Community

- Increasing Access to life saving CPR
- Equitable Distribution of Grants
- Equitable Infrastructure Investments
- Prioritizing Neighborhoods for Planning and Investment
- Tacoma Index Case Studies

This tool also informed the department's work on a Resiliency Grant in 2021 and a Recovery Grant in 2022. People who were in areas of low and very low economic opportunity were able to access the funds they needed more easily.

With this focus on equity, there was a **333% increase in dollars awarded to Black-owned businesses** in 2021. More than \$3.385 million in grants up to \$15,000 were awarded, **56% of which went to BIPOC-owned businesses.**



# Inaugural Equity Map Booklet

- 58 GIS Projects across 13 industries
- Featuring nonprofits, SLG and Esri partners
- Highlights Equity Strategic Plan Steps





# State of California

Esri technology interconnects people & organizations



# Get Active: Esri Equity Resources

## Build Your Strategic Equity Plan with GIS

Advance equity and social justice in your community

Five part webinar series

[Register now](#)



## Watch the Recordings

Build Your Strategic Equity Plan with GIS Webinar Series

[Build Your Strategic Equity Plan with GIS \(esri.com\)](#)

## Mapping Equity Across Industries

Advance equity and social justice in your community

Change happens when you have a location!



## Visit

Esri's Equity and Social Justice Website

Signup for Equity Newsletter, Join LinkedIn Group, Download Equity Strategy Brochure

[Equity & Social Justice | Mapping Equity Across Industries with GIS \(esri.com\)](#)

## EQUITY AND SOCIAL JUSTICE MAP BOOKLET



## Download

Inaugural Esri's Equity and Social Justice Map Booklet

Featuring Customer Examples across 13 GIS Industries





esri®

THE  
SCIENCE  
OF  
WHERE®

Copyright © 2024 Esri. All rights reserved.