

Racial Equity Commission

Budget Equity Committee and Data Committee Joint Meeting: April 17, 2025 at 4:00pm

Virtual | In-Person Viewing Room Available At |

Los Angeles Valley College

ACA Building, Room 2504

5800 Fulton Ave, Valley Glen, CA 91401



Call to Order & Opening Remarks

Commissioner Gabriel Maldonado
Budget Equity Committee Lead

April 17, 2025 Budget Equity and Data Committee Joint Meeting

Disclaimer

The information and opinions expressed by presenters or public commenters before the Commission reflect the views of the speaker. They do not necessarily represent the views of the Commission or the Office of Land Use and Climate Innovation.

Land Acknowledgement

Commissioner Gabriel Maldonado
Budget Equity Committee Lead

April 17, 2025 Budget Equity and Data Committee Joint Meeting

Review of the Agenda

Dr. Larissa Estes

Executive Director

California Racial Equity Commission

April 17, 2025 Budget Equity and Data Committee Joint Meeting

Public Meeting Agenda

- Welcome & Call to Order
- Public Comment on matters not on the agenda
- Approval of Committee Minutes – ACTION ITEM
- Presentation and Discussion – From Data to Focused Allocations: Best Practices and Tools in Los Angeles County
- 10 Minute RECESS
- Discussion of Key Themes
- Presentation – Data Standards
- Next Steps for Staff Action
- Adjournment

Establishment of Quorum and Public Comment Process

Agustin Arreola

External Affairs Manager

Office of Land Use and Climate Innovation

Public Comment

In Person

- Complete and submit public comment card
- Separate public comment cards for each agenda item
- Listen for your name and line up by the podium
- Staff will call your name to the podium
- Please adhere to the time limit determined by the Chair (2 minutes)

Virtual

- Visit racialequity.lci.ca.gov/meetings, and complete the public comment form linked there to be added to the queue
- Listen for your name
- When you hear your name, click “Raise Hand” under the “Participants” menu in your Zoom platform, or press *9 if you are joining by phone
- Staff will ask you to unmute your microphone
- Please adhere to the time limit determined by the Chair (2 minutes)

Public Comment on matters not on the agenda

Agustin Arreola

External Affairs Manager

Office of Land Use and Climate Innovation

Public Comment

In Person

- Complete and submit public comment card
- Separate public comment cards for each agenda item
- Listen for your name and line up by the podium
- Staff will call your name to the podium
- Please adhere to the time limit determined by the Chair (2 minutes)

Virtual

- Visit racialequity.lci.ca.gov/meetings, and complete the public comment form linked there to be added to the queue
- Listen for your name
- When you hear your name, click “Raise Hand” under the “Participants” menu in your Zoom platform, or press *9 if you are joining by phone
- Staff will ask you to unmute your microphone
- Please adhere to the time limit determined by the Chair (2 minutes)

Approval of Committee Minutes – ACTION ITEM

Commissioner Gabriel Maldonado
Budget Equity Committee Lead

Commissioner Dr. Manuel Pastor
Data Committee Lead

Public Comment

In Person

- Complete and submit public comment card
- Separate public comment cards for each agenda item
- Listen for your name and line up by the podium
- Staff will call your name to the podium
- Please adhere to the time limit determined by the Chair (2 minutes)

Virtual

- Visit racialequity.lci.ca.gov/meetings, and complete the public comment form linked there to be added to the queue
- Listen for your name
- When you hear your name, click “Raise Hand” under the “Participants” menu in your Zoom platform, or press *9 if you are joining by phone
- Staff will ask you to unmute your microphone
- Please adhere to the time limit determined by the Chair (2 minutes)

Presentation and Discussion – From Data to Focused Allocations: Best Practices and Tools in Los Angeles County

The Honorable Holly J. Mitchell,
Los Angeles County Supervisor, District 2

Los

Dr. D'Artagnan Scorza,
Director for Racial Equity, Los Angeles County

Executive

Building Back Better: Data-Driven Equity Practices and Tools

April 17, 2025

D'Artagnan Scorza, Ph.D., Executive Director of Racial Equity



County of Los Angeles
**Anti-Racism,
Diversity,
& Inclusion**

ceo.lacounty.gov/ardi





County of Los Angeles
**Anti-Racism,
Diversity,
& Inclusion**

**CREATING AN LA COUNTY
WHERE WE ALL THRIVE**

In July 2020, the Board of Supervisors passed a motion that created the Board's Eighth-Board directed priority known as the Anti-Racism, Diversity, & Inclusion (ARDI) Initiative. The Board's motion boldly articulated an anti-racism agenda that will guide, govern, and increase the County's ongoing commitment to fighting racism in all its dimensions.

FIRST DISTRICT
Hilda L. Solis



SECOND DISTRICT
Holly J. Mitchell



THIRD DISTRICT
Lindsey P. Horvath



FOURTH DISTRICT
Janice Hahn



FIFTH DISTRICT
Kathryn Barger



Use QR Code to view the ARDI website.



Recovering Better Than Before: Ensuring Equitable Implementation of the American Rescue Plan

On July 13, 2021, the Board of Supervisors (Board) adopted a motion to **strategically use ARPA funds to the maximum benefit of the communities suffering disproportionate health and economic impacts from the COVID-19**

The motion highlights the imperative opportunity to transform the lives of millions of County residents by centering equity, harm reduction, and providing proportional resources to address the needs of our residents and communities.



1. Equity principles



2. A proposed formula that all departments must apply to ARPA funding requests



3. A public-facing website with a dashboard that reports on the County's ARPA expenditures and outcomes by program and department



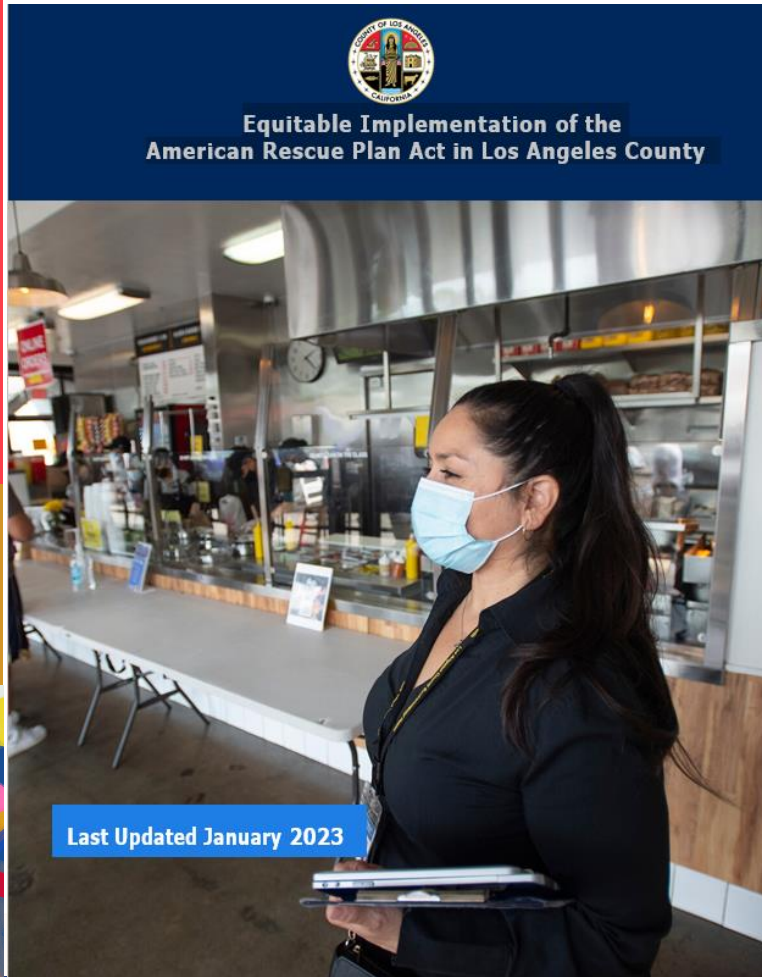
4. A public-facing dashboard identifying ARPA contracting opportunities



5. An implementation plan to accurately capture data for non-geographically concentrated communities disproportionately impacted by COVID-19



Equitable Implementation of the American Rescue Plan Act in LA County



The plan is based on three strategic pillars, which create the foundation for a “Better Than Before” recovery in Los Angeles County.

STRATEGIC PILLAR 1 Equity-Focused Investments

Allocation: **\$567.90 Million**

Addressing longstanding inequities in hard-hit and historically disadvantaged communities through

STRATEGIC PILLAR 2 Building A Bridge to an Equitable Recovery

Allocation: **\$239.68 Million**

Deploying supportive services through an equity lens to jumpstart recovery in communities that have

STRATEGIC PILLAR 3 Fiscal Stability and Social Safety Net

Allocation: **\$167.42 Million**

Sustaining and expanding key programs to ensure a strong safety net as we emerge from the

American Rescue Plan Act Program Design Process

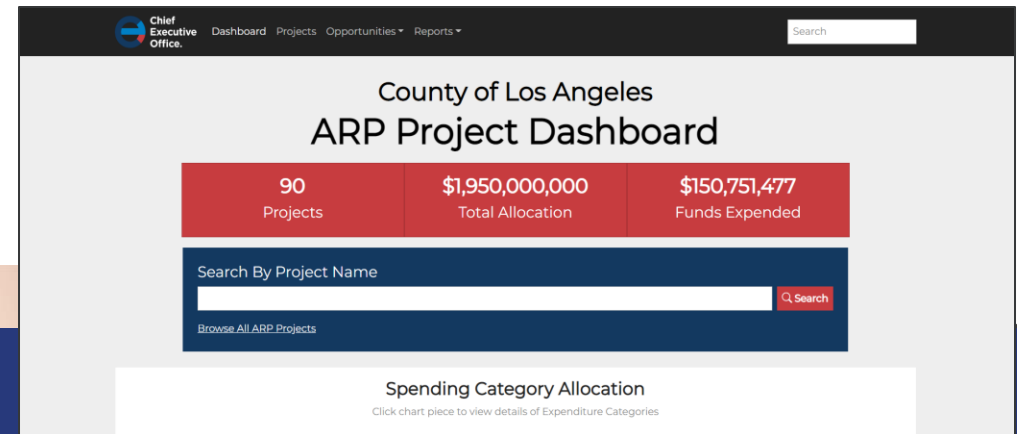
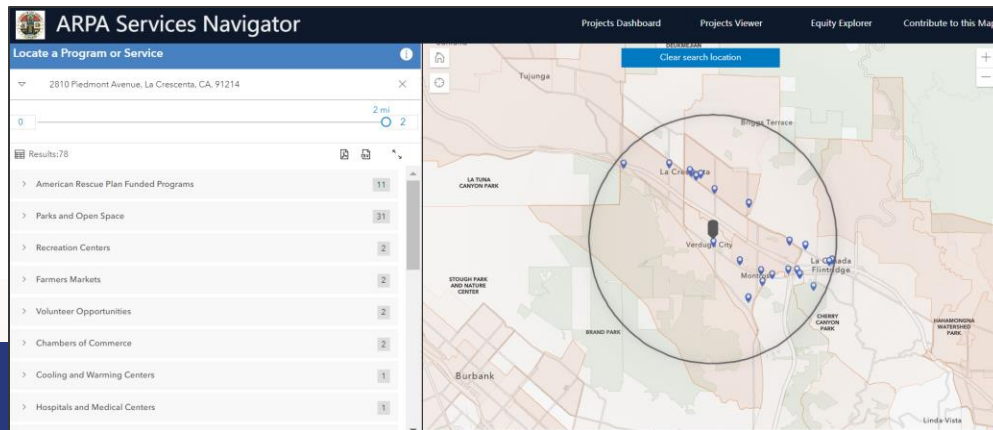
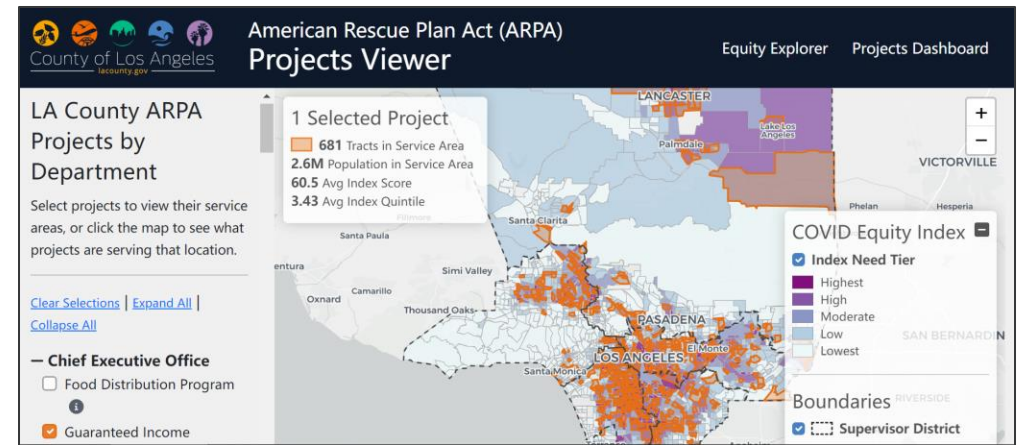
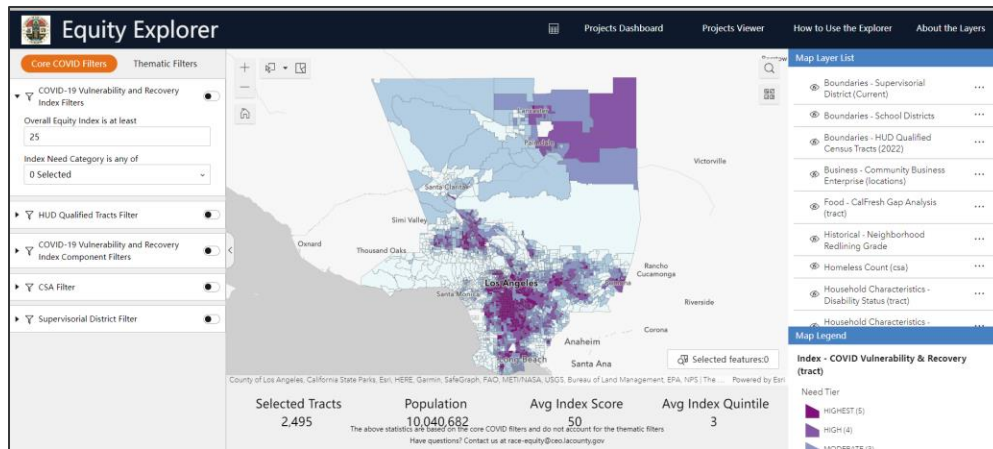
- Equitable Contracting
- Outreach and Engagement
- Publicly Accessible Data Tools

Covid-19 Vulnerability and Recovery Index

Risk	Severity	Recovery Need	Hard to Count Populations	Non-geographically Located Communities
<p>Percent essential workers</p> <p>Percent population under 200% of federal poverty level</p> <p>Percent residing in overcrowded housing units</p> <p>Noncitizen population</p>	<p>Percent population under 200% of federal poverty level</p> <p>Percent population age 75+ in poverty</p> <p>Percent uninsured population</p> <p>Heart attack hospitalization rate</p> <p>Diabetes hospitalization rate</p> <p>Asthma rates</p>	<p>Percent essential workers</p> <p>Percent population under 200% of federal poverty level</p> <p>Unemployment rate</p> <p>Percent uninsured population</p> <p>Gun injury rate</p> <p>Single-parent households</p>	<p>Tenant Vulnerability</p> <p>Homeless Status</p> <p>MDWVBE Status</p> <p>Preferred Language</p> <p>Area Agency on Aging Services</p> <p>Child Welfare Services</p> <p>SUD Program</p> <p>Location</p> <p>GAIN/GROW enrollment</p> <p>SOGI</p>	<p>Partner with CBOs to identify hard-to-count populations</p> <p>Partner with internal County entities focused on important populations</p> <p>Engage in participatory mapping effort</p> <p>Develop a workgroup</p>

Publicly Accessible Data Tools

Supports equitable funding decisions, transparency, and accountability.



Efforts to Improve Outreach and Language Access



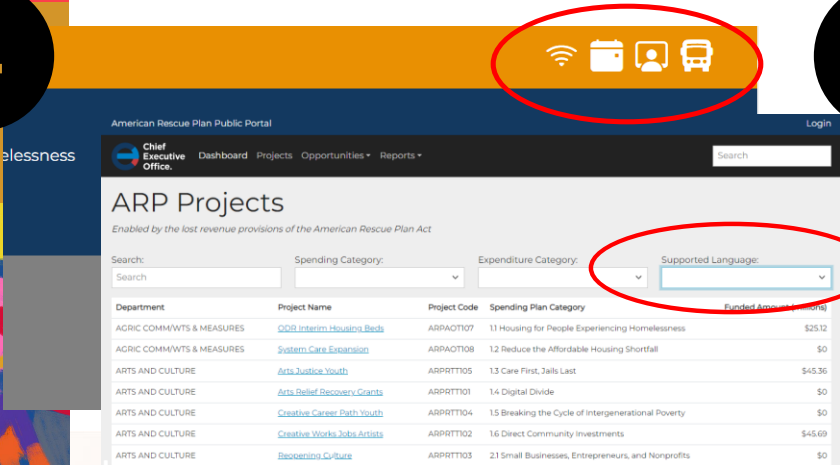
Multilingual media briefing on ARP resources



In-language ARP grant application submission event



Centralized online language services hub



improve useability for immigrant communities



Partnership with the Equitable Recovery Initiative



Master Services Agreement

Equitable Access to Funding, Resources, and Services

Ongoing efforts include: 1) equitable contracting strategies to help smaller organizations fairly compete for available funds; and 2) outreach and engagement activities to promote funding opportunities, resources, and services among communities highly impacted by COVID-19.

- Developed expedited contracting and procurement process
- Released the ARP Support Services Master Agreement
- Supported the Equitable Recovery Initiative
- Created a unified communication and branding strategy to raise awareness of contracting opportunities, resources, and services



The top screenshot shows the "Doing Business with LA County" page from the Chief Executive Office of Los Angeles County. It features a dark blue background with a city skyline in the background. The text includes "CEO Chief Executive Office COUNTY OF LOS ANGELES", "Doing Business with LA County", "Register to become a vendor with LA County and access ARP contracting opportunities.", "Learn more at:", and a button with the URL "ceo.lacounty.gov/recovery/contract-opportunities".

The bottom screenshot shows the "Need housing assistance?" page from the same office. It features a dark blue background with a city skyline. The text includes "CEO Chief Executive Office COUNTY OF LOS ANGELES", "Need housing assistance?", "Los Angeles County residents can access COVID-19 recovery housing resources.", and four orange buttons with icons and text: "RENT REFIEF PROGRAMS", "RENTAL REGISTRY", "EVICTION MORATORIUM", and "FORECLOSURE PREVENTION". At the bottom, it says "Visit recovery.lacounty.gov/residents and learn more." and includes a small circular seal.

Countywide ARP Outcomes

- LA County invested in 120 projects across several key areas to improve community conditions and support recovery.
- Outreach efforts focused on informing eligible businesses, CBOs, and community members of programs, services, and grant/contract opportunities to increase access
 - “LA County & You: Together We Thrive” reached approximately 3,629,264 individuals in a multi-lingual campaign featuring English, Spanish, Korean, and Chinese languages
 - The Community Navigator Program has reached 29,717 individual from June 2024-February 2025.
- As of February 2025, The County awarded 392 agreements with 287 agencies, totaling a reported \$1,144,884,646.
- Allocated revenue replacement funds totaling \$868,890,591 supported:
 - General relief public assistance payments
 - County indigent defense program that provides representation for qualified individuals
 - County Fire District, which provides life safety emergency services

Project Outcomes

Areas of Focus

- Economic Assistance and Financial Stability
- Support for Vulnerable and Marginalized Populations
- Health, Public Safety, and Wellness Initiatives
- Housing Security and Homelessness Prevention
- Employment and Workforce Development
- Digital Equity, Education, and Accessibility
- Food Security and Nutrition
- Public Sector Capacity and Community Resilience

Program Highlights

- Over 1,000 participants received \$1,000 monthly payments through the Guaranteed Basic Income program.
- Essential DV services reached over 2100 adults and 2600 dependent children have been served
- Tenant-Landlord mediation program served 2,566 individuals, resolving 1,082 cases to date.
- 1,269 underserved youth received workforce development, with 1,249 employed by DPR recreation and aquatics programs.
- The grocery voucher program served 19,596 households.



County of Los Angeles
**Anti-Racism,
Diversity,
& Inclusion**



(213) 974-1761



ardi@ceo.lacounty.gov



ceo.lacounty.gov/ardi



STATE OF CALIFORNIA
**RACIAL
CALIFORNIA
COMMISSION**

Public Comment

In Person

- Complete and submit public comment card
- Separate public comment cards for each agenda item
- Listen for your name and line up by the podium
- Staff will call your name to the podium
- Please adhere to the time limit determined by the Chair (2 minutes)

Virtual

- Visit racialeguity.lci.ca.gov/meetings, and complete the public comment form linked there to be added to the queue
- Listen for your name
- When you hear your name, click “Raise Hand” under the “Participants” menu in your Zoom platform, or press *9 if you are joining by phone
- Staff will ask you to unmute your microphone
- Please adhere to the time limit determined by the Chair (2 minutes)

RECESS

10 Minutes

We will be back at 5:30pm

Discussion of Key Themes

Dr. Larissa Estes
Executive Director

FY25-26 Legislative Proposals

- AB 766 (Sharp-Collins) – for any strategic plans applicable, develop, or **update strategic plan to reflect the use of data analysis and inclusive practices to more effectively advance racial equity** and respond to identified disparities with changes to the organization’s policies, programs, and operations.
 - Requires all agencies and departments, subject to the Governor’s authority to undertake a racial equity analysis **before implementing any budget or before any regulation** takes effect.
 - Racial equity analysis would be completed by appointed DEI officer or as specified.
- AB 1186 (Patel) – establishes the **Demographic Research Unit with the Department of Finance** and the position of the Chief Statistician of California
 - Requires the **standardized collection of demographic data** across state agencies
 - **Coordinate** the activities of statistical data collection
 - Ensure the **efficiency and effectiveness** of state’s statistical data collection

Key themes from Committees

- Accountability - oversight and implementation of Framework, policy directive
- Transparency - ensuring plain language and accessibility, role of technology
- Prioritization - Identifying community needs by geography, validating community priorities
- Input and Engagement - understanding what decisionmakers need to inform policy proposals, ensuring agency engagement, and consistent community engagement
- Technical Assistance

Public Comment

In Person

- Complete and submit public comment card
- Separate public comment cards for each agenda item
- Listen for your name and line up by the podium
- Staff will call your name to the podium
- Please adhere to the time limit determined by the Chair (2 minutes)

Virtual

- Visit racialeequity.lci.ca.gov/meetings, and complete the public comment form linked there to be added to the queue
- Listen for your name
- When you hear your name, click “Raise Hand” under the “Participants” menu in your Zoom platform, or press *9 if you are joining by phone
- Staff will ask you to unmute your microphone
- Please adhere to the time limit determined by the Chair (2 minutes)

Presentation – Data Standards

Jason Lally, Chief Data Officer
Office of Data and Innovation

April 17, 2025 Budget Equity and Data Committee Joint Meeting



Statewide data standard: Demographic data collection

Jason Lally, State Chief Data Officer, Office of Data
and Innovation

California Demographic Data Standard

- Data standard published on 3/19
- URL:
<https://hub.innovation.ca.gov/data/standard/>
- Scan the QR code for the link!



A screenshot of the 'California Data Standard' page on the 'Innovation Hub' website. The page header includes the 'Official website of the State of California' logo and the 'Office of Data and Innovation' title. A search bar is visible in the top right. The main content area features a breadcrumb trail: 'CA.gov / Innovation Hub / Data / California Data Standard'. On the left, an 'On this page' sidebar lists sections: 'Introduction' (highlighted with a red box), 'Example', 'Scope of responsibilities for State users', 'Data categories', and 'Data standard governance'. The main content area has a 'Standards and principles' tag and a large heading 'California Data Standard' followed by a sub-heading 'Introduction'. The introductory text states: 'Collecting and analyzing data is essential for ensuring California state government programs and policies serve all residents fairly and effectively. When state agencies lack reliable data about how Californians access and experience their services, they may unintentionally overlook or increase gaps in effective services, creating inefficiencies and limiting the effectiveness of state funding. Good data collection allows agencies to identify differences in participation, outcomes, and quality of services across California's diverse communities and regions and take targeted action to ensure all eligible Californians can fairly access government programs and services.'



Demographic Data Standard: Engaged California

- Welcome
- Civility pledge
- Moderation policy
- What brings you here?
- Prioritize topics
- Demographic questions
- Tell us about yourself
- What is your race and/or ethnicity?**
- Submit your responses
- What's next and feedback survey
- LA recovery topics group consensus
- Terms and Conditions

powered by **ETHELO**

What is your race and/or ethnicity?

Purpose of data collection

This data is collected to inform outreach and engagement. When we share the report at engaged.ca.gov, we will share only aggregate data.

Your response is optional.

Select all categories that apply and enter additional details in the spaces below. You may report more than one detailed category.

American Indian or Alaska Native

Individuals with origins in any of the original peoples of North, Central, and South America.

My ranked recovery priorities

Emergency communication	<input type="checkbox"/> <input type="checkbox"/> <input type="checkbox"/> <input type="checkbox"/> <input type="checkbox"/>
Emergency planning & community safety	<input type="checkbox"/> <input type="checkbox"/> <input type="checkbox"/> <input type="checkbox"/>
Emotional & mental health support	<input type="checkbox"/> <input type="checkbox"/> <input type="checkbox"/> <input type="checkbox"/>
Debris removal & environmental recovery	<input type="checkbox"/> <input type="checkbox"/> <input type="checkbox"/> <input type="checkbox"/>
Wildfire prevention prioritization & accountability	<input type="checkbox"/> <input type="checkbox"/> <input type="checkbox"/> <input type="checkbox"/>
Climate & community resilience	<input type="checkbox"/> <input type="checkbox"/> <input type="checkbox"/> <input type="checkbox"/>
Economic recovery & small business support	<input type="checkbox"/> <input type="checkbox"/> <input type="checkbox"/> <input type="checkbox"/>
Financial & legal assistance	<input type="checkbox"/> <input type="checkbox"/> <input type="checkbox"/> <input type="checkbox"/>
Infrastructure & utilities restoration	<input type="checkbox"/> <input type="checkbox"/> <input type="checkbox"/> <input type="checkbox"/>
Housing & rebuilding	<input type="checkbox"/> <input type="checkbox"/> <input type="checkbox"/> <input type="checkbox"/>



Demographic Data Standard Example

What is your race and/or ethnicity?

Select all that apply AND enter additional details in the spaces below.
Note: you may report more than one detailed category.

American Indian or Alaska Native

Enter, for example, Navajo Nation, Blackfeet Tribe of the Black Indian Reservation of Montana, Native Village of Barrow Inupiat Traditional Government, Nome Eskimo Community, Aztec, Maya, etc.

Asian

Individuals with origins in any of the original peoples of Central or East Asia, Southeast Asia, or South Asia, including, for example, Chinese, Asian Indian, Filipino, Vietnamese, Korean, and Japanese.

Chinese Filipino Asian Indian Vietnamese Korean Japanese Cambodian Laotian

Another group not listed (for example, Taiwanese, Hmong, Pakistani)

Black or African American

Individuals with origins in any of the Black racial groups of Africa, including, for example, African American, Jamaican, Haitian, Nigerian, Ethiopian, and Somali.

African American Nigerian Jamaican Ethiopian Haitian South African

Another group not listed (for example, Eritrean, Ghanaian, Kenyan)

Hispanic or Latino

Includes individuals of Mexican, Puerto Rican, Salvadoran, Cuban, Dominican, Guatemalan, and other Central or South American or Spanish culture or origin.

Mexican Salvadoran Guatemalan Puerto Rican Spaniard Peruvian

Another group not listed (for example, Nicaraguan, Honduran, Cuban)

Middle Eastern or Northern African

Individuals with origins in any of the original peoples of the Middle East or North Africa, including, for example, Lebanese, Iranian, Egyptian, Syrian, Iraqi, and Israeli.

Iranian Lebanese Egyptian Iranian Iraqi Syrian

Another group not listed (for example, Palestinian, Jordanian, Moroccan)

Native Hawaiian or Pacific Islander

Individuals with origins in any of the original peoples of Hawaii, Guam, Samoa, or other Pacific Islands, including, for example, Native Hawaiian, Samoan, Chamorro, Tongan, Fijian, and Marshallese.

Native Hawaiian Samoan Chamorro Fijian Tongan Marshallese

Another group not listed (for example, Palauan, Tahitian, Maori)

White

Individuals with origins in any of the original peoples of Europe, including, for example, English, German, Irish, Italian, Polish, and Scottish.

English German Irish Italian Scottish French

Another group not listed (for example, Polish, Swedish, Russian)



Public Comment

In Person

- Complete and submit public comment card
- Separate public comment cards for each agenda item
- Listen for your name and line up by the podium
- Staff will call your name to the podium
- Please adhere to the time limit determined by the Chair (2 minutes)

Virtual

- Visit racialequity.lci.ca.gov/meetings, and complete the public comment form linked there to be added to the queue
- Listen for your name
- When you hear your name, click “Raise Hand” under the “Participants” menu in your Zoom platform, or press *9 if you are joining by phone
- Staff will ask you to unmute your microphone
- Please adhere to the time limit determined by the Chair (2 minutes)

Next Steps for Staff Action

Dr. Larissa Estes

Executive Director

California Racial Equity Commission

Adjournment

Commissioner Dr. Manuel Pastor

Data Committee Lead

Next Racial Equity Commission Meeting



Implementation and Technical Assistance
Committee Meeting
May 15, 2025

Community Engagement Committee Meeting
May 22, 2025

Viewing Room Available for 5/15 and 5/22 at
1400 10th Street Sacramento, CA

Website: racialequity.lci.ca.gov

Email: RacialEquityCommission@opr.ca.gov

Thank you!

